



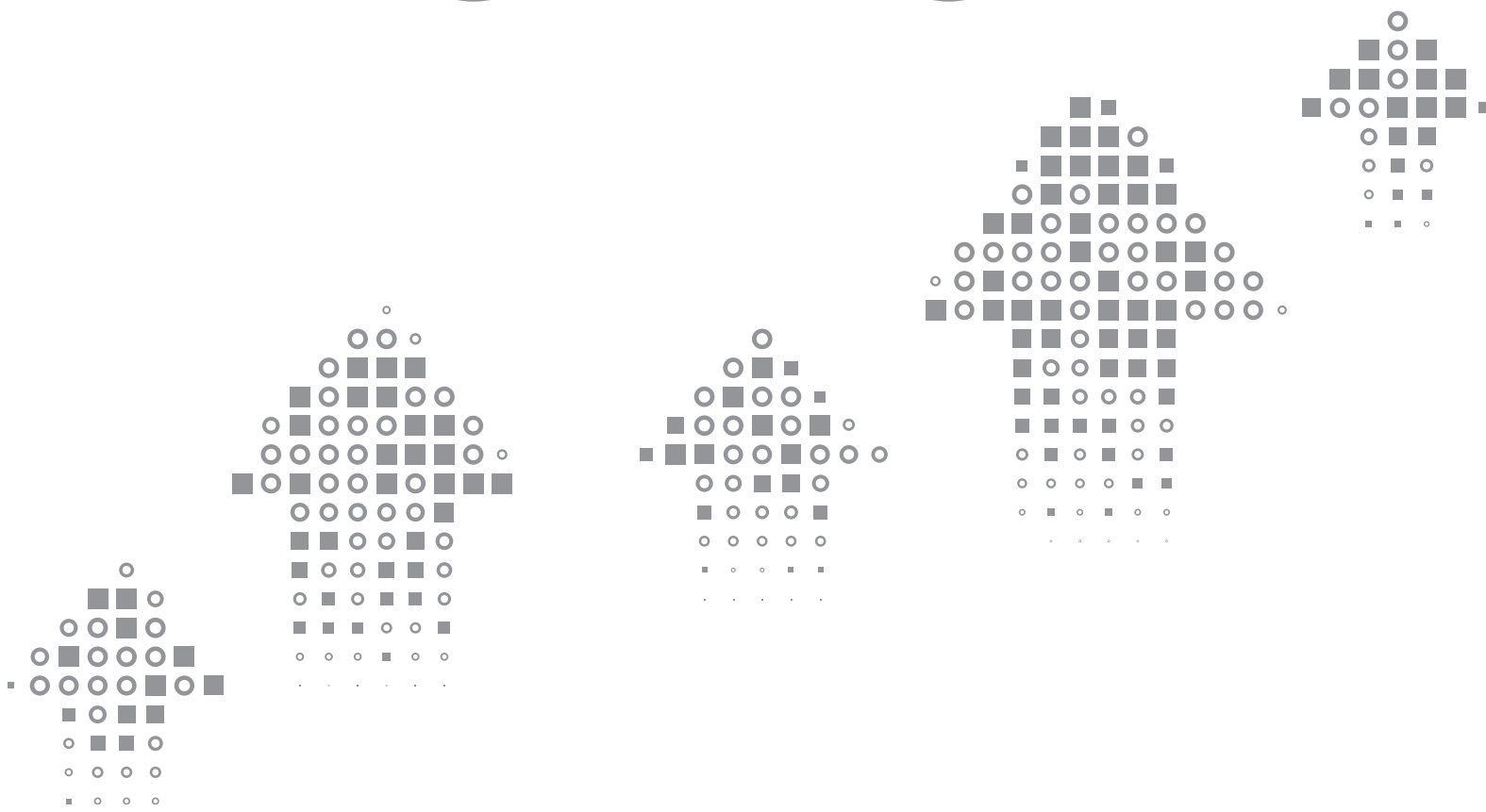
1C:Enterprise

**Business Application
Development Platform**





LOW-CODE 1C:ENTERPRISE HIGHLOAD



Rapid Development Platform for Custom-Built Business Automation Solutions

Scalable, reliable, efficient, cross-platform, cloud, mobile, desktop

1C:Enterprise is a platform that enables the rapid creation of business automation products. Currently, there are thousands of off-the-shelf applications built on the platform. With the platform's development environment, it is possible to further customize and expand these applications' functionality. Due to simple interfaces and the visual editing paradigm, the 1C:Enterprise platform is easy to learn for new developers and lay users. Applications developed on the platform quickly scale from one to thousands of users and integrate with other 1C and third-party solutions satisfying growing business needs.

An innovative technology platform, as the core, and applications built on the platform, both customized and out-of-the-box solutions—that's the 1C:Enterprise a nutshell.

This system architecture brings open, functional, and flexible applications, short implementation times, high performance, scalability from a single user to many thousands, cloud and mobile capability. All of this has made the 1C:Enterprise a tremendously popular platform for developing business process automation software.

Over 1,600,000 organizations of all sizes, from small companies and sole proprietors to the largest corporations and government agencies, are using the 1C:Enterprise platform daily to improve their management and accounting efficiency.

As of today, 1C and its partners have created over 1,300 platform-based standalone applications, ranging from small business management (1C:Retail, 1C:Company Management) to large enterprise automation (1C:ERP WE, 1C:Document Management, etc.) solutions. Many developers also use the platform to create a vast number of custom solutions that meet the needs of specific customers.

To ensure the 1C:Enterprise platform is always one step ahead of its competitors and fulfills growing market demands, 1C is continually developing its platform by adding the latest technologies, tools, and innovative features.

RAPID BUSINESS APPLICATION DEVELOPMENT TOOLS

Among 1C:Enterprise's advantages are high speed of applications development and a low entry barrier for developers.

Experience shows that even novice developers can start creating 1C:Enterprise-based business applications after just 1-2 weeks of training. A low barrier of entry is assured by the platform's low-code development environment, which allows visual editing for a wide variety of development cases. It helps 1C:Enterprise developers minimize the amount of programming effort as such.

Greater part of developing business applications on the 1C:Enterprise platform involves configuring metadata without the need to actually write code. With the visual editing deeply integrated into the platform, the coding is kept to a minimum (low code concept, "minimum programming"). All code-based development is done using a high-level domain-specific modeling language designed with business-related tasks in mind. In other words, the platform utilizes a domain-driven design approach to provide the specific tools needed to develop business software.

1C:Enterprise platform applications are open source.

Due to the low-code concept and domain-specific language, the source code is genuinely clear and easy to read. Both implementation specialists and everyday users can easily view such code in the 1C:Enterprise-based applications and understand the business logic embedded in them. As a result, users can easily support and improve 1C:Enterprise applications, customizing and expanding their functionality to meet their business needs.

The openness of 1C:Enterprise solutions means that hand-offs between development and support teams are simple and straightforward, with no risk of dead ends caused by changes in development and support teams. Any 1C:Enterprise user can read any other 1C developer's code and also extend and support it as needed.

SCALABILITY AND PRODUCTIVITY

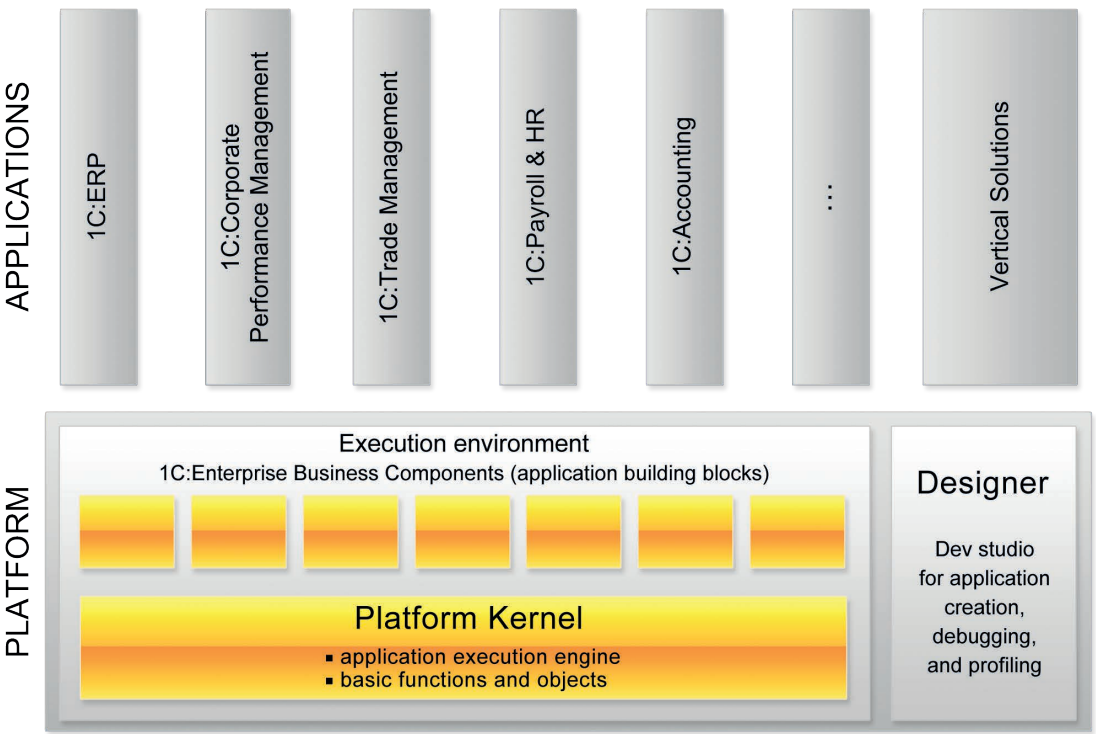
- As your company gets bigger, 1C:Enterprise solutions grow from single-user applications to corporate systems with tens of thousands of concurrent users.
- The system architecture ensures high performance and reliability even on a quick increase in system loads and processing volumes.
- A scalable, fault-tolerant application server cluster with dynamic load balancing ensures high system performance.
- Security profiles grant additional protection, including prohibiting applications from accessing local files or the Internet, which is particularly important when working in the cloud.
- The database copy mechanism is designed to handle large amounts of data more efficiently. It allows developers to configure the 1C:Enterprise platform to create a copy of selected data (all application data or a subset thereof) in separate physical databases and automatically update it. It makes it possible to run resource-intensive OLAP scenarios on a copy of the application database, thus preventing high load or data locks on the primary database.
- The Data accelerator is a product developed by 1C. The Data accelerator is designed to speed up the processing of large amounts of data. Basically, it creates an in-memory database on the 1C:Enterprise server cluster. In some cases when utilized in combination with the database copy mechanism (to store copied data), the Data accelerator can significantly speed up OLAP scenarios.

SUCCESSFUL LOAD TEST WITH 30,000 USERS WORKING SIMULTANEOUSLY IN A SINGLE INFOBASE

A load test of the flagship solution 1C:ERP Enterprise Management, conducted with 30,000 active users in a single infobase on the PostgreSQL database (developed by 1C and running on Linux), achieved an Application Performance Index (APDEX) score of 0.858. This is rated as "Good" and confirms smooth and comfortable operation for all users.

The test demonstrated the system's high stability, reliability, and robustness under heavy load, affirming its suitability for complex enterprise environments based on the 1C:Enterprise 8 platform.

This test reflects the scale of the largest global organizations, where tens or even hundreds of thousands of employees may be on staff, though in real-life scenarios it's rare for all of them to use the ERP system at the same time.



TOOLS TO SUPPORT LARGE CORPORATE SYSTEMS

- 1C:Corporate Toolkit is a suite of dedicated tools that help evaluate how well standard 1C applications suit clients' needs, as well as enhance the operational qualities of release candidates or already implemented systems. 1C:CT carries out simulated multiuser load tests, evaluates system applicability within defined conditions, evaluates system scalability, and assists in selecting server infrastructure, software, and similar.
- To support the implementation and operation of large-scale projects, 1C Company provides technical monitoring and support. Services are provided by 1C Corporate Technical Support Center (CTSC) staff.

CROSS-PLATFORM DESIGN, SUPPORT FOR MULTIPLE DBMS

- 1C:Enterprise is compatible with Microsoft Windows and Linux for both servers and clients, and supports thin and thick clients on macOS.
- 1C:Enterprise is designed to run on x86-64 and ARM architectures.
- Mobile clients run on Android, iOS, and Windows devices.
- Web clients are compatible with all widely used browsers, including Google Chrome, Firefox, Safari, Microsoft Internet Explorer, Microsoft Edge.
- 1C:Enterprise is designed to work with PostgreSQL for 1C as well as MS SQL Server, IBM DB2, Oracle Database, and 1C's proprietary file-based DBMS.

1C:ENTERPRISE DEVELOPMENT TOOLS IS A MODERN SCALABLE ENVIRONMENT FOR APPLICATION DEVELOPMENT

- 1C:Enterprise Development Tools (1C:EDT) are based on Eclipse, an integrated open-source environment used worldwide to develop modular, cross-platform applications.
- 1C:EDT allows the development of applications in agreement with the fundamental principles of the 1C:Enterprise platform. 1C:EDT is a set of tools for automating the development process. These tools allow developers to save time and avoid wasting resources on routine tasks. Thanks to the support of plugin technology, 1C:EDT allows users to expand the functionality of existing development tools.
- 1C:EDT is available for all major operating systems: Windows, Linux, and macOS.
- The tools have built-in integration with Git and also support other version control systems.

FLEXIBILITY AND CUSTOMIZABILITY

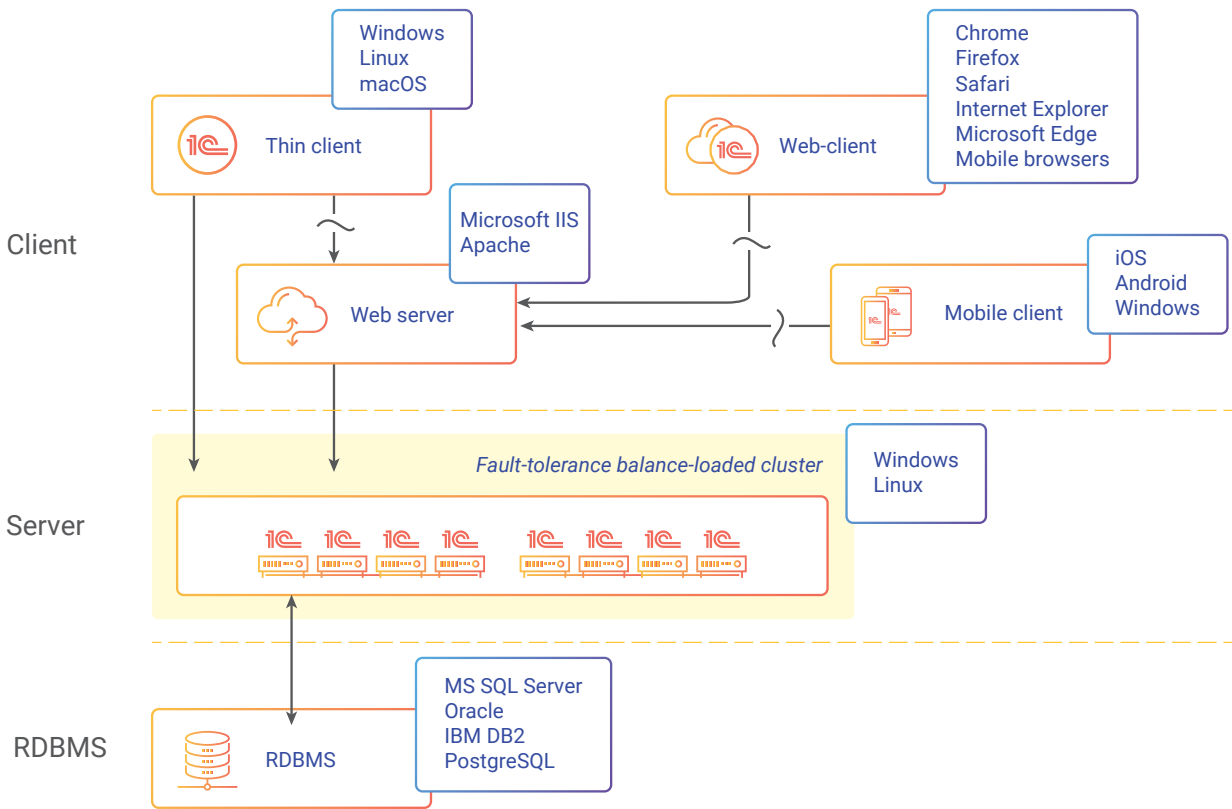
- Rich customization options for 1C:Enterprise platform applications make it possible to tailor them to the needs of a specific industry or a particular business.
- 1C:Enterprise-based systems can grow and improve as businesses develop additional needs and processes, implement new management and reporting practices, and adjust to changing regulations and corporate standards. The open-source approach means that the possibilities for modification are both wide-ranging and easy to implement.
- Extensions are a way to customize applications by modifying existing functions and adding new ones as required by customer business process needs, all with no impact on standard applications' source code.
- Extensions are similar to plugins that connect to standard applications. At that, developers set specific conditions for extensions to work, e.g., only for defined user groups. It provides unique customization options for SaaS solutions built on the 1C:Enterprise platform. Thanks to the option of adding multiple customized extensions to standard applications, public clouds can offer various functions to different groups of users as their needs may be.
- Extensions also automate the process of updating customized solutions to new versions of underlying standard applications. Easily connecting to the new release, extensions enable users to get all the functionality of the updated application without losing their modifications.
- The 1C:Enterprise platform offers a consistent development approach, ensuring applications share a common structure (fixed metadata model) beyond their user interface. It makes it easier for new developers to quickly understand and contribute to ongoing projects. Should the need arise, entire development teams can be transitioned seamlessly, minimizing disruption. This is further bolstered by the vast network of 1C:Enterprise partners and the estimated pool of over 300,000 developers, ensuring access to expertise whenever needed.

SECURITY

- 1C:Enterprise provides personalized data access, down to the level of object fields and individual records, and keeps a full log of changes.
- With the built-in encryption mechanism, the platform can communicate with third-party encryption modules and encrypt data within applications.
- The platform supports many authentication methods, including authentication via the 1C:Enterprise platform, an operating system, OpenID, and OpenID Connect.
- Two-factor authentication and biometric authentication are also supported.

CLOUD SOLUTIONS AND WEB ACCESS

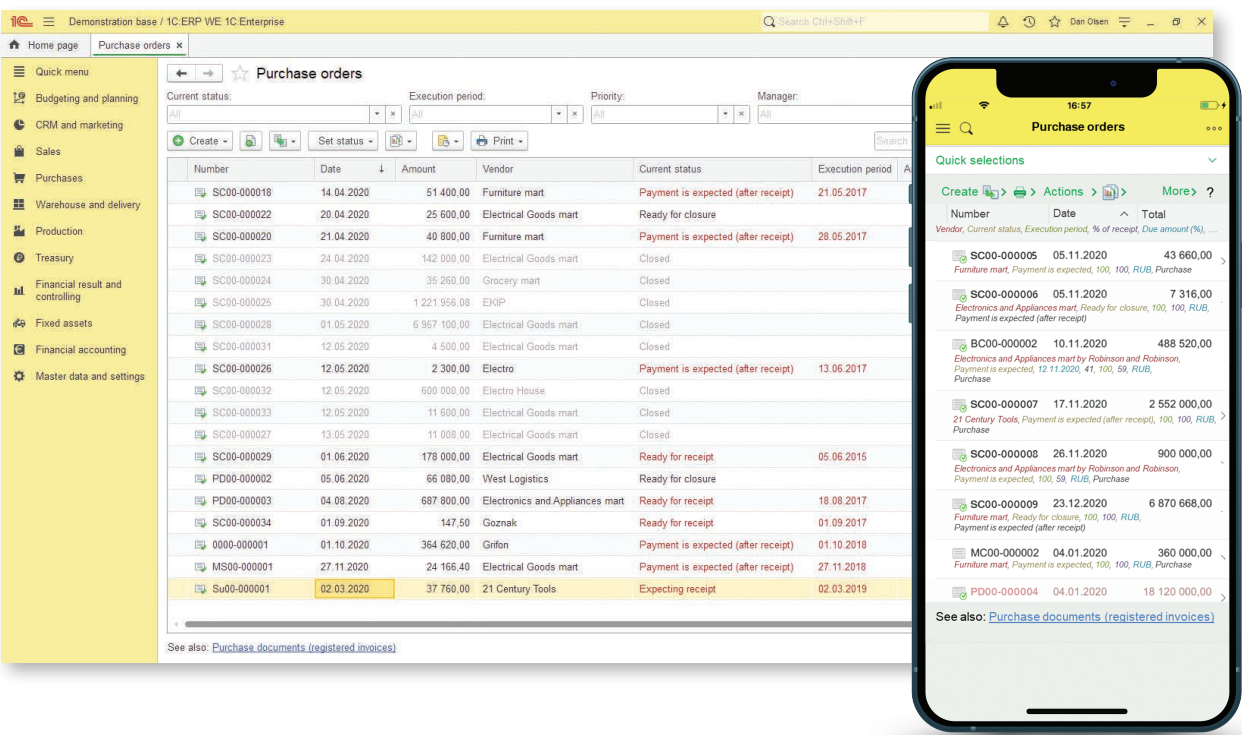
- The 1C:Enterprise platform offers several options for working online, including web interfaces accessible via standard browsers.
- 1C:Fresh technology makes it possible to create cloud services that enable users to run 1C:Enterprise applications over the Internet.
- 1C:Fresh allows deployment of public clouds to offer 1C:Enterprise applications as SaaS and private cloud solutions built for large corporations, holdings, or government agencies.



MOBILITY

- 1C:Enterprise mobile technology makes it possible to develop applications for tablets, smartphones, and other Android and iOS mobile devices.
- Developers create mobile solutions using the same 1C:Enterprise desktop application development environment utilizing the same fundamental application development principles.
- Mobile applications support:
 - Offline mode with all data stored on mobile devices and multiple options to exchange data with the central system, including synchronization over the Internet.
 - Online mode with direct connection to 1C:Enterprise platform servers and optional offline and resync mode in case of server connection loss.

USER-FRIENDLY INTERFACE



- 1C:Enterprise fully meets the strictest business applications' usability requirements.
- 1C:Enterprise tools and features combine an easy learning curve for newbies with high performance for experienced users.
- Users can customize application interfaces: accessible commands, displayed data, and more.
- The interface automatically adapts to reflect the implemented functionality, user roles, and custom user settings.

SYSTEM MANAGEMENT AND ADMINISTRATION

1C:Enterprise offers:

- Robust system installation, maintenance, update, and administration tools;
- Job scheduling;
- Access rights management and configuration based on user roles;
- User action monitoring and system event logging;
- Platform monitoring tools for tracking and resolution of critical situations either by initiating preset actions or alerting system administrators;
- System performance analytics, bottleneck detection, and performance optimization tools.

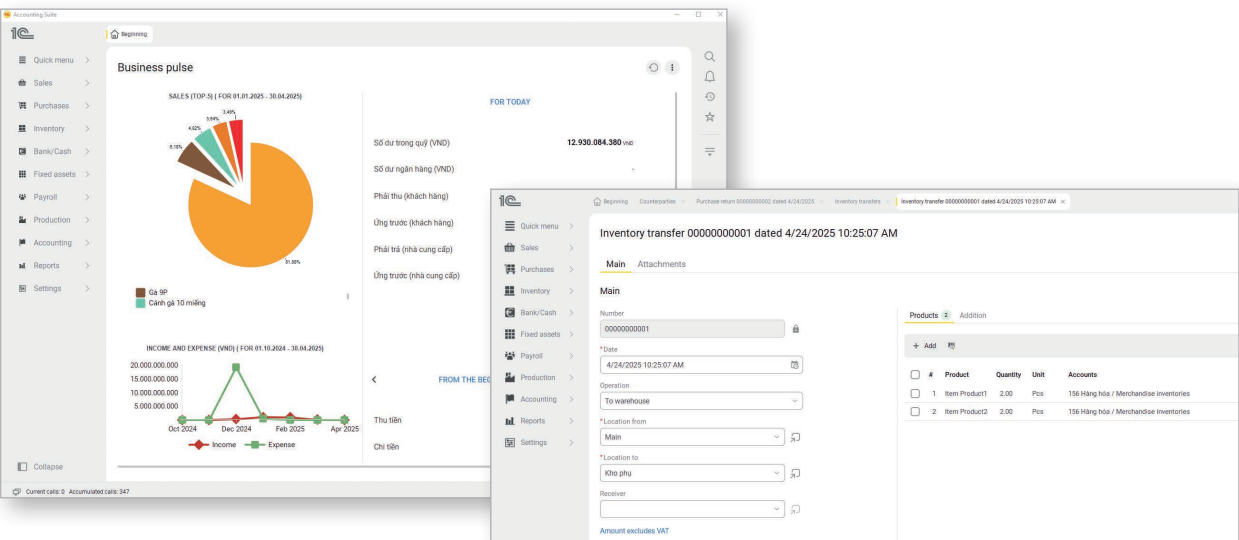
NEW USER INTERFACE

1C:Enterprise 8.5 introduces a modernized user interface featuring both light and dark themes.

Designed in line with current UI and UX best practices, the updated interface is cleaner, more open, and easier to navigate, significantly enhancing readability and user comfort.

All elements have been streamlined for quick, intuitive interaction, making everyday tasks faster and more efficient.

The new interface is also fully supported in mobile applications built on the 1C:Enterprise 8 platform.



GEOGRAPHICALLY DISTRIBUTED SYSTEMS AND INTEGRATION WITH OTHER SYSTEMS

- 1C:Enterprise is an open system supporting integration with software and hardware practically in any combination due to the wide use of open standards and data transfer protocols.
- The platform provides tools for transferring files in multiple formats, grants access to all system objects for third-party applications, ensures interaction with third-party systems (XML, JSON, and similar) by utilizing a variety of exchange protocols and interaction standards, and allows working with the Internet and email.
- The 1C:Enterprise platform allows developers to create web and HTTP services for applications and also add existing external web and HTTP services to their applications. External systems access 1C application data via OData protocol.
- Applications built on the 1C:Enterprise platform support integration with various hardware, including retail and warehouse units (portable data terminals, POS terminals, hand-held scanners, and similar). Many of our off-the-shelf solutions come with built-in support for widespread commercial and industrial equipment.
- The mechanism of distributed databases streamlines the rapid creation and deployment of geographically distributed systems.
- Universal data exchange mechanism enables easy integration with various third-party information systems.

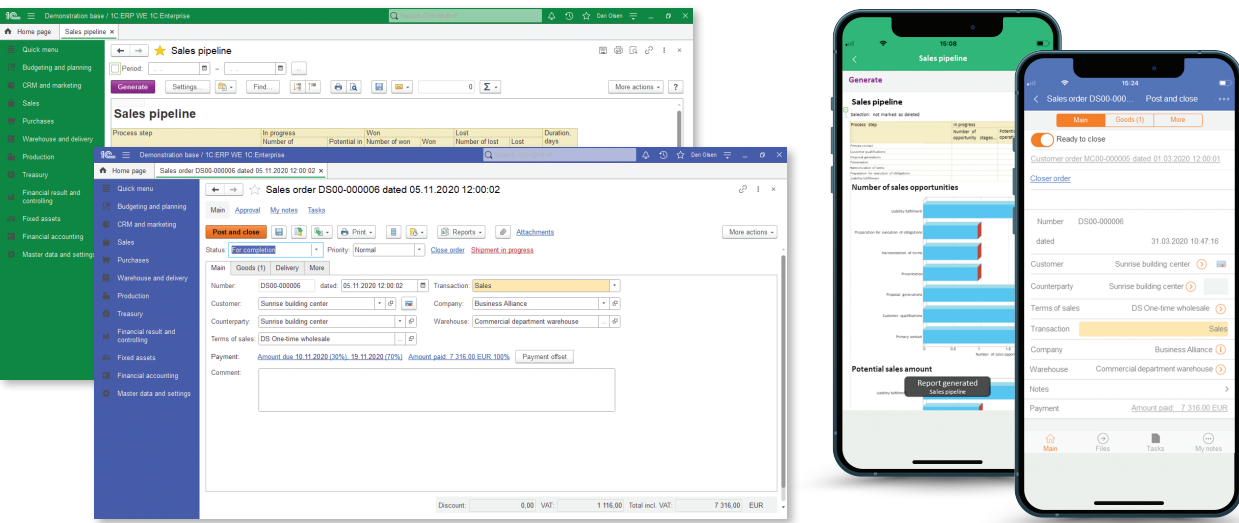
ADVANCED BUSINESS ANALYTICS TOOLS

1C:Enterprise business analytics tools do not just create static reports but generate interactive documents tightly integrated into applications. Users can modify report parameters, restructure reports to their preferences, use existing report elements as jumping-off points to create additional reports, and much more.

A wide range of charts and diagrams, including Gantt, pie, circle, bubble, scatter plots, and interactive charts, allow users to visualize data in the form convenient for analysis and, when using interactive charts, even change visual data on the fly.

CORPORATE STYLE INTERFACE

The 1C:Enterprise platform contains various mechanisms that allow modifying interfaces in applied solutions to fit customers' style requirements for corporate software products.



1C:ANALYTICS

1C:Analytics is a 1C:Enterprise platform component designed for creating business intelligence systems (BI).

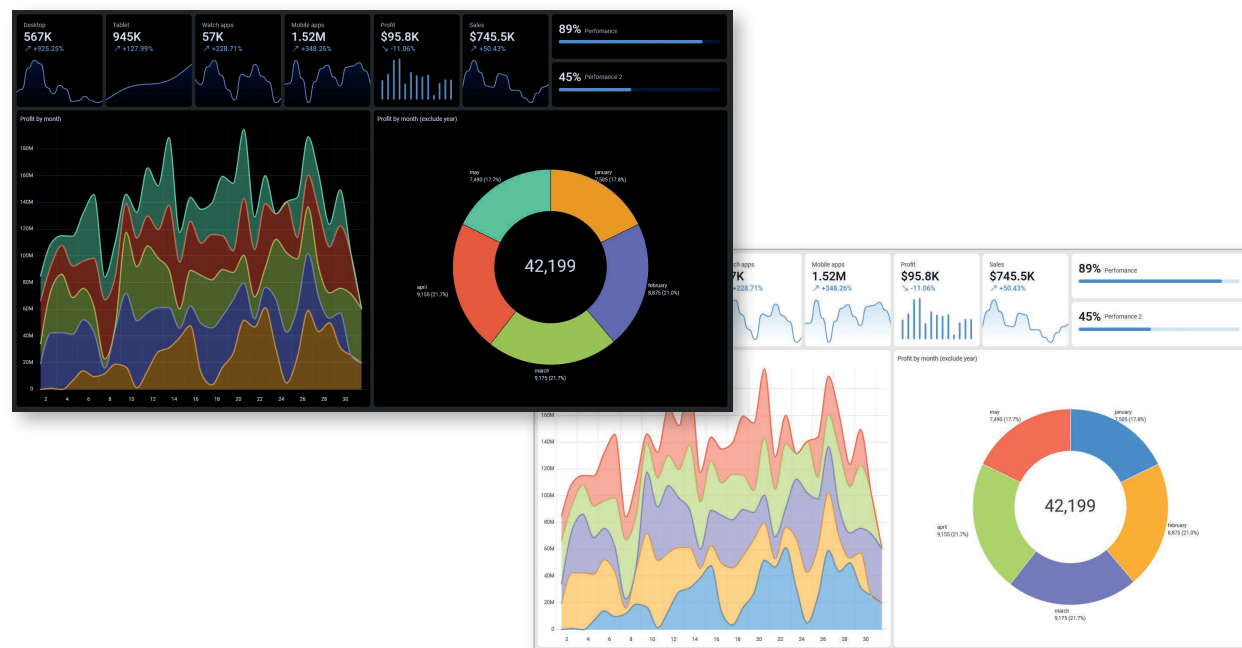
1C:Analytics connects directly to existing 1C systems and provides an intuitive, user-friendly interface for viewing and analyzing company data in real time. The application runs in a browser on both desktop and mobile devices. To connect to a 1C:Enterprise system, users simply enter the web address of the published infobase.

Business analysts get an easy-to-use but powerful toolkit for creating reports in the form of tables, charts, and dashboards.

1C: Analytics ensures complete transparency of data for company management, enabling them to analyze data in a highly efficient way, which in many cases is the matter of critical importance for digital transformation processes.

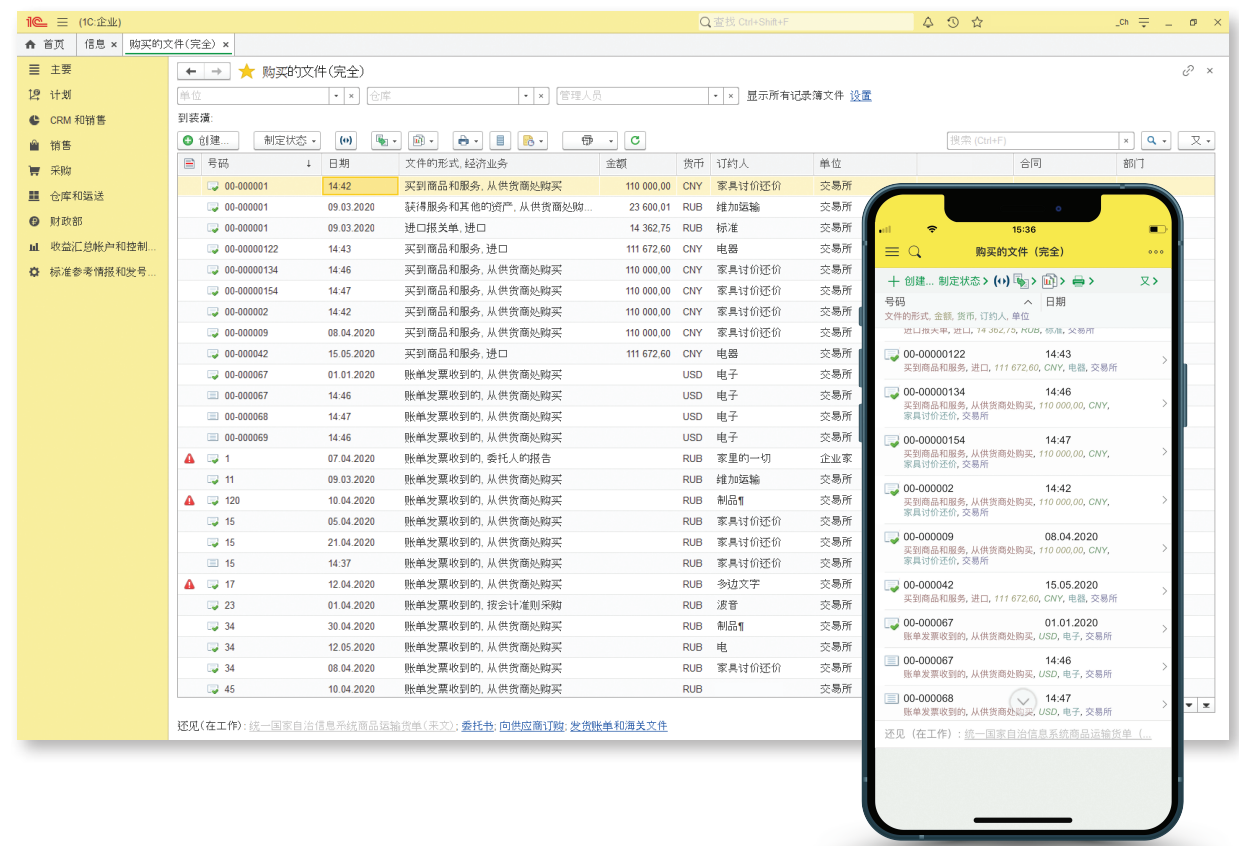
The unique advantages of 1C:Analytics for 1C product users:

- Access to the required data right inside the platform with no need to export it to external applications.
- Login to 1C:Analytics with 1C user account grants users the same access rights originally set in 1C infobase, thus letting them always stay within the safe environment of the 1C:Enterprise platform.
- To ensure maximum performance, 1C has developed a dedicated in-memory database, the Data Accelerator, optimized for OLAP scenarios.
- Geographic maps, either built-in or sourced from external services, can be used to create charts tied to specific regions.
- For popular configurations like 1C:HRM CORP and 1C:ERP, pre-built analytical dashboards are readily available within 1C:Analytics. This allows you to deploy a fully functional BI system for your existing setup in a matter of weeks.



LOCALIZATION

The 1C:Enterprise platform is localized into 23 languages, including English, Spanish, German, French, Chinese, Turkish, Greek, Russian, Bulgarian, Hungarian, Polish, Romanian, Azerbaijani, Georgian, Kazakh, Latvian, Lithuanian, Vietnamese, Ukrainian, Arabic.



COLLABORATION SYSTEM

- The platform comes with built-in communication tools with all the functions of modern messengers. Users of 1C:Enterprise applications can communicate via text messages, send files, share screens, and set up video and audio conference calls right in the application window.
- The 1C Collaboration System supports "in context" discussions, i.e., linked to specific application objects like documents, catalog elements, reports, and similar. The platform saves all the communication with respective application objects and displays it alongside.
- By using the Collaboration System, application developers can implement brand new business scenarios that involve chatbots, AI assistants, and similar, thus making applications more user-friendly, capable of providing user notifications right within applications, and much more.
- The Collaboration System supports integration with Telegram Messenger that can be helpful in many business case scenarios.
- The Collaboration System can be used in the 1C:Enterprise mobile client.

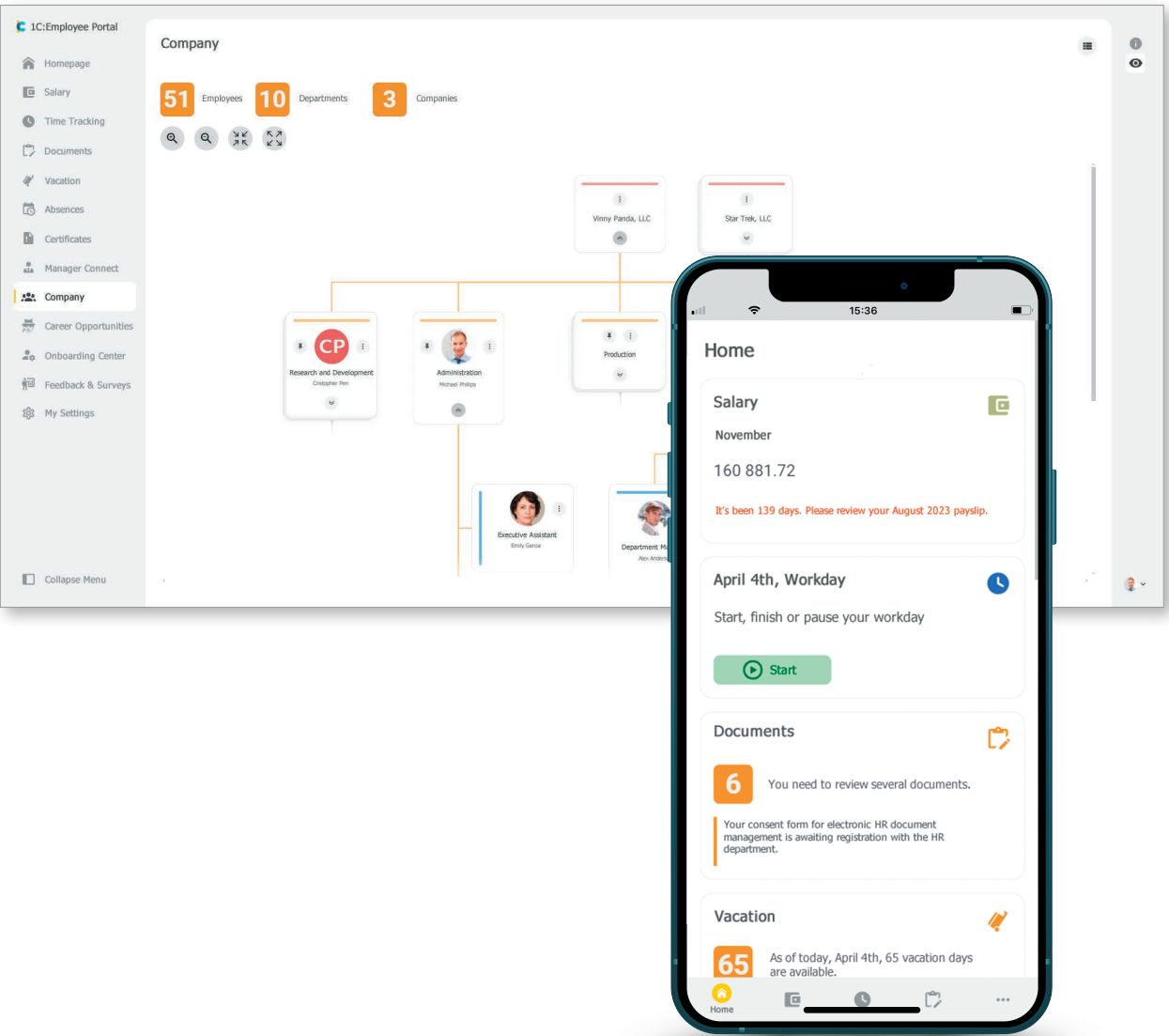
1C:ENTERPRISE.ELEMENT TECHNOLOGY

1C:Enterprise.Element opens new horizons for the 1C:Enterprise platform. Thus, this technology allows to create applications not only for businesses but for private customers (consumer products). Use it to build:

- online stores;
- front offices, B2B and B2C dashboards;
- headless services.

1C:Enterprise.Element can boast such features as

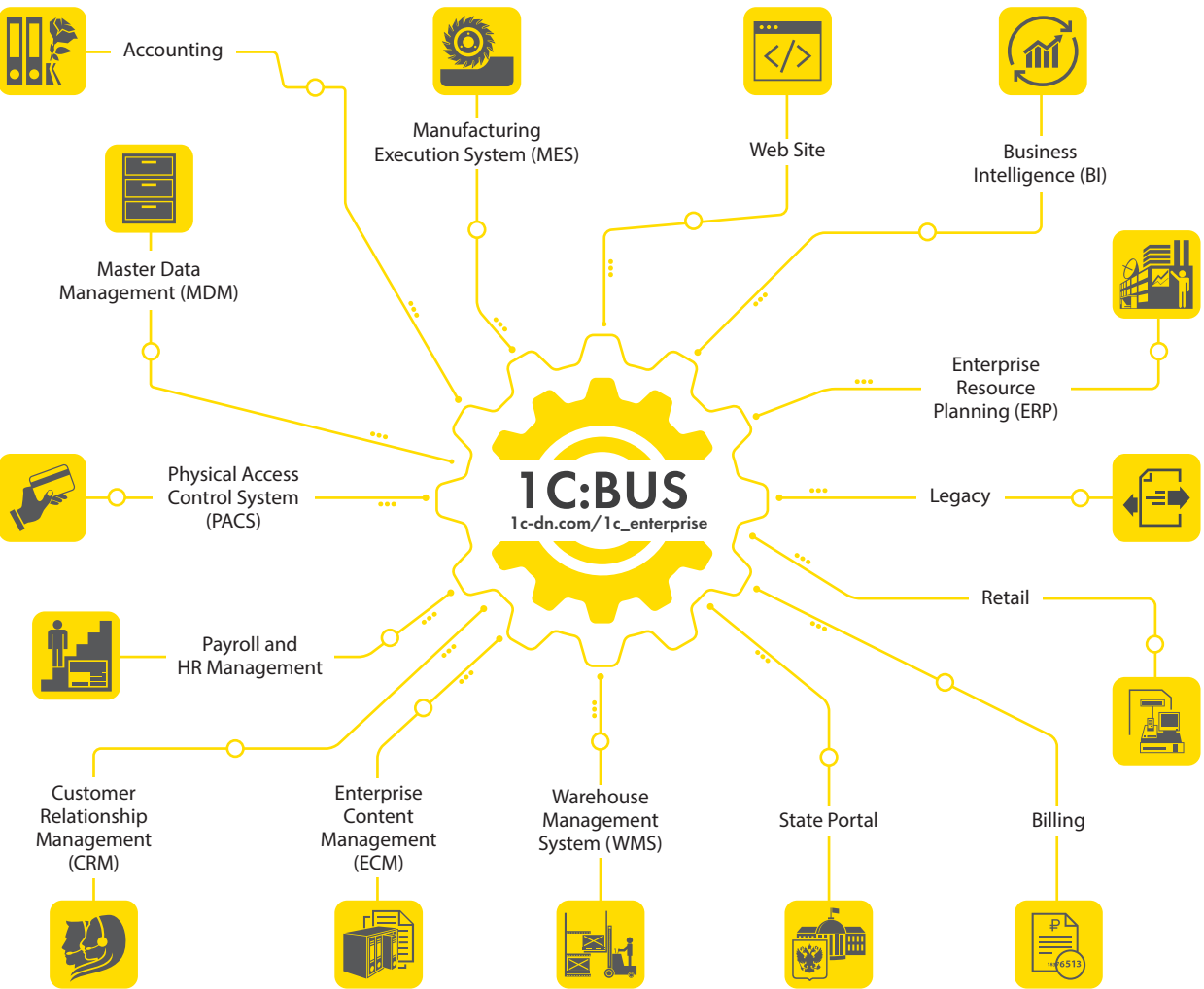
- high-end user interface specifically tailored for web and mobile devices;
- support for modular programming;
- cloud-based development environment accessible via a browser;
- deployment of applications both in the cloud and locally.



1C:BUS

1C:Bus is a standalone enterprise service bus that ensures guaranteed asynchronous message delivery between applications on the 1C:Enterprise platform and other information systems.

1C:Bus routes messages in the delivery process, picking suitable addressee(-s) per predefined rules. Senders do not have to worry about non-supported formats in addressee systems as 1C:Bus automatically converts the message into the required format. 1C:Bus offers a convenient and easy-to-use web-based toolset to create, manage and modify integration schemes.



AUTOMATED TESTING

The 1C:Enterprise platform offers an automated application testing feature. It is possible to record all user actions during testing and then use this data for evaluating applications' usability or creating automated test scenarios.

SUPPORT FOR EXTERNAL DATA SOURCES

Support for external data sources allows 1C:Enterprise applications to work with data from practically any DBMS. 1C applications can connect to multidimensional data sources, such as Microsoft Analysis Services, Oracle Essbase, IBM InfoSphere Warehouse.

ARTIFICIAL INTELLIGENCE AND MACHINE LEARNING TECHNOLOGIES

The 1C:Enterprise platform offers a set of tools and services that make use of artificial intelligence and machine learning. These include:

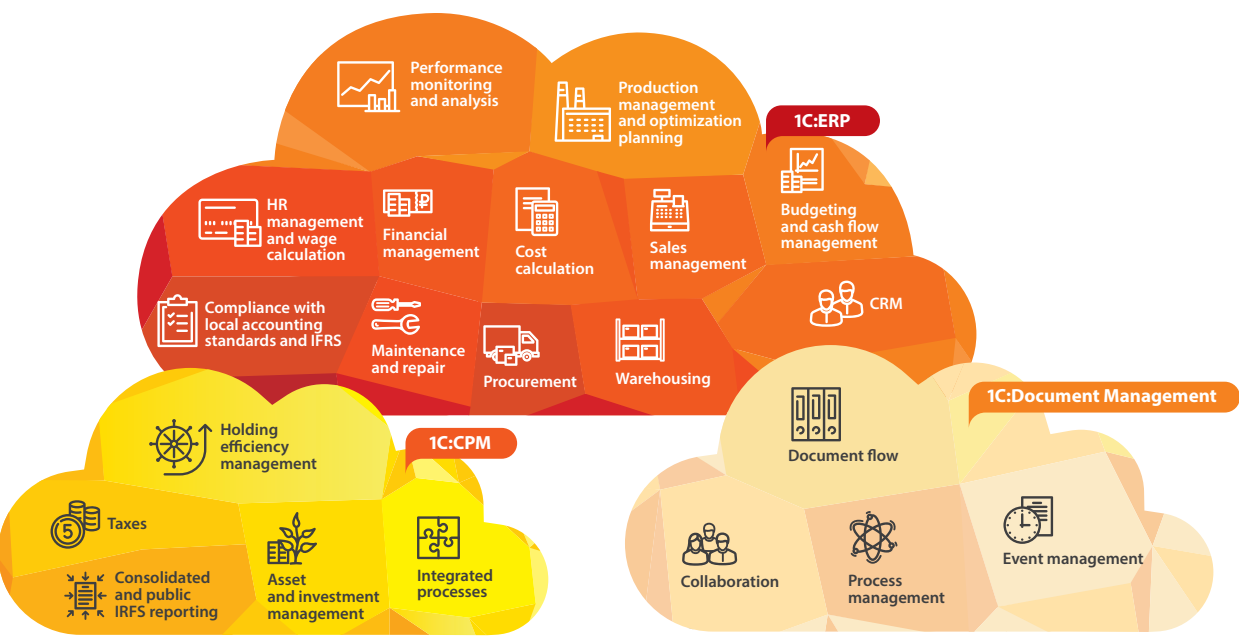
- Text-to-speech conversion for generating spoken content from written input
- Speech recognition from both live audio and recorded files
- A cloud-based service for recognizing documents from images and scans
- 1C:Forecasting, a tool that analyzes historical data to predict trends such as sales performance
- 1C:Assistant, an AI assistant built into the development environment that supports developers in writing code

OTHER PLATFORM FEATURES

- Full-text search allows users to find the needed information in applications quickly. Thus, a search for a client's name returns the client in the client directory, as well as all documents (invoices, contracts, orders, and others) that refer to the client.
- Data history is a mechanism that neatly stores the history of changes to application data made by users. This mechanism allows flexible analysis of data changes, comparison of different data versions, and rollback to a specified version.
- The external components technology allows developing dedicated programs (external components) in virtually any programming language in Windows, Linux, macOS and then use them to dynamically connect to and closely interact with the 1C:Enterprise system, thus expanding 1C:Enterprise capabilities. Among other features, it enables seamless integration with retail and logistics hardware, including barcode scanners, RFID readers, label printers, and others.

BUSINESS PRODUCTS BUILT ON THE 1C:ENTERPRISE PLATFORM

Applications built on the 1C:Enterprise platform handle a broad range of corporate accounting and management tasks. Customers can choose the 1C:Enterprise-based applications that suit their corporate needs the best. 1C applications can be easily reconfigured to support changing business processes, legislative requirements, or economic circumstances without any downtime whatsoever. It includes adding more workstations, implementing new functionality, modifying business processes, and integrating with other 1C:Enterprise and third-party business applications. Both 1C partners and customers' IT specialists can implement and support 1C applications.



1C:ERP (Enterprise Resource Management)

Streamline Your Business Across Industries

1C:ERP empowers businesses of all sizes in various industries to streamline operations. With a track record of over 25,000 successful implementations in 50+ countries, 1C:ERP offers a robust suite of functionalities that leverage industry best practices. By unifying core functions like sales, finance, inventory, and production within a single platform, 1C:ERP fosters improved collaboration, data visibility, and ultimately, boosts overall operational efficiency.



1C:CPM (Corporate Performance Management)

Planning, Accounting, and Corporate Performance Management Solution for Holding Companies of Various Sizes

Designed for automation of holding companies' management processes with the following use-case scenarios in mind:

- a system for comprehensive management of finance in holding companies and shared services centers;
- a standard structure to manage corporate finances in affiliates with the option to merge or seamlessly integrate the structure with real-time enterprise accounting systems;
- a CPM system to consolidate reporting, budgeting, and business analysis in a single tool.

1C:Document Management (Enterprise Content Management)

Streamlining Your Document Flow

1C:Document Management is designed for businesses and public institutions and fully automates the flow of official and internal documentation both in hardcopy and electronic format.

Enterprise-wide usage of 1C:Document Management boosts collaboration efficiency, increases employee performance, improves document quality, minimizes document creation time, and with all this, maintains confidentiality.

1C:Document Management CORP edition is recommended for medium and large businesses with complex documentation procedures.

1C:Trade Management

Grows with Your Wholesale & Retail Business

Whether you're a small startup or a large enterprise, 1C:Trade Management offers a scalable solution for managing your wholesale or retail operations. This all-in-one application simplifies supply chain management, purchasing, sales, finance, and more, helping you improve efficiency and profitability at every stage.

1C:Payroll and HR Management

Payroll Calculation and Human Resources Management

1C:Payroll and HR Management provides extended functionality for human resources management, recruitment, and training tasks, as well as tools for automating departments of occupational safety and health.

1C:Accounting

Universal Business and Tax Accounting Software Fully Supporting the Russian Accounting Standards

1C:Accounting offers convenient and highly efficient business and tax accounting for any business, including wholesale and retail, commission-based sales, services, manufacturing, construction, and others. All accounting processes are well structured and fully comply with applicable local legislation. In addition to generating standard accounting reports, the solution offers a wide range of report customization and drill-down options. 1C:Accounting allows integration with 1C:Payroll and HR Management, 1C:Trade Management, 1C:Retail, and other 1C applications.








1C:Retail

Retail Automation

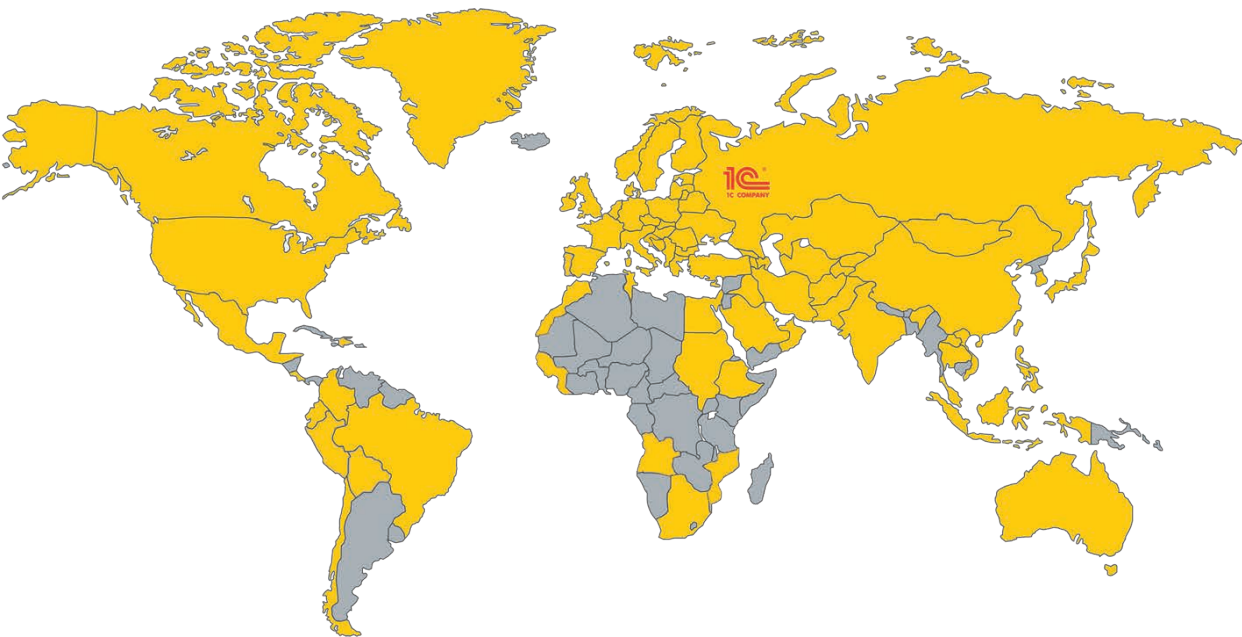
1C:Retail and 1C:Retail-based industry-specific applications are an excellent solution to manage a retail business, whether it is a single store or a network.

Industry-Specific Applications

By utilizing industry-specific 1C:Enterprise applications, companies can reduce the time and cost required to implement the solutions they need. 1C Company and its partners develop and maintain a wide selection of products ranging from small business accounting solutions to corporate ERP-class systems.

	State and municipal administration		Real estate, property management		Fuel and energy sector
	Healthcare and pharmaceutical industry		Science and education		Retail and wholesale
	Public utilities		Manufacturing		Transport and logistics
	Service sector		Agriculture and forest management		Financial sector
	Culture		Construction and development		

Companies use applications built on the 1C:Enterprise platform in more than 90 countries in Asia, the Middle East, Europe, Africa, and the Americas



PROJECTS



Russian Post, Russia

An automated 1C:Enterprise system for over 150,000 workstations ensures compliance with a unified methodology for all types of accounting and compliance with IFRS. It provides for real-time management of inventory as well as monitoring and management of business activities.

A unified enterprise document management system based on the 1C:Document Management placed the company headquarters, 86 regional branches, and over 1,000 structural divisions into a single unified domain.



Transmash Holding Inc., Russia

The 1C solutions suite is the corporate automation standard, featuring ERP, CPM, WMS, ECM, MES, and ITIL systems. With the implementation of the suite, the company got 60,000 workstations to manage its operations.

PROJECTS



Moscow City Government, Russia

A SaaS-based unified cloud finance management system serves more than 2,000 city institutions totaling 40,900 users and processes data on more than 500,000 employees.



KAMAZ Group, Russia

Automation of more than 8,000 workstations at KAMAZ group with the 1C:Enterprise platform allowed to cut costs, streamlined accounting and management processes, and ensured rapid consolidation and analysis of financial statements from all subsidiaries.



Rosatom Corporation, Russia

The implementation of 1C:ERP Rosatom Unified Corporate System in more than 100 companies within the corporation has led to the creation of over 7,000 workstations. The Corporate Performance Management, a centralized holding management system, linked about 1,500 Rosatom employees and subsidiary groups. All of these have contributed significantly to establishing unified management processes across the atomic industry.



Sollers Group, Russia

With over 6,000 workstations, the group cut manufacturing expenses, optimized stock, achieved a more steady supply of components, and reduced production downtime.



Ministry of Agriculture, Russia

The ministry uses information systems based on the 1C:Enterprise platform to ensure food security, support the development of agriculture, grant preferential agriculture loans, and monitor the industry. With over 15,000 users, the systems monitor more than 20,000 indicators in over 300,000 units of the agricultural industry.

PROJECTS



Beeline. Mobile service provider, Russia

With all company retail processes automated with the 1C:Enterprise solutions, customers get serviced through computer workstations and mobile client applications. More than 2,000 retail outlets across Russia with more than 8,000 users from Kaliningrad to Kamchatka utilize 1C:Enterprise solutions in their daily work. The system availability never falls below 99.99%.



Bang&Bonsomer Group, Finland

The deployment of 1C:ERP allowed the company to automate business processes, optimize information exchange within the corporate group, and redirect employee time away from routine operations. Flexible integration of 1C:Enterprise with other systems further increased the precision and efficiency of the company's operations.



Komatsu Group, Russian branch

1C:Enterprise CRM system bundled with the mobile application enabled the company field employees to improve sales and increase overall efficiency.



Independent Distribution Collective, USA

The company tracks all its sales, handles accounting, and prepares reports using the AccountingSuite cloud service available to customers in the US. AccountingSuite is built on the 1C:Enterprise platform.



D-wine restaurants, Spain

The company manages its business process and finances with a custom solution based on the 1C:Enterprise platform.



ACM Meat Factory Ltd, UK

The company implemented 1C:Drive, a powerful yet flexible ERP system for automating small and medium businesses, quickly increased its market share and profitability.

PROJECTS



XPO Logistics, Russia and USA

XPO Logistics reduced vehicle downtime and increased freight traffic volume using 1C:Transport Logistics, Shipping, and Vehicle Management CORP.

The system enabled the company to concurrently process over 3000 complex billing operations for a wide range of transportation services. The system improved route planning and optimized loading. Vehicle downtime is now reduced by 13%, idling decreased by 8%, while the number of orders increased by 12%, and the number of trips increased by 27%.

Here are just some companies that have successfully implemented 1C applications and integrated solutions:

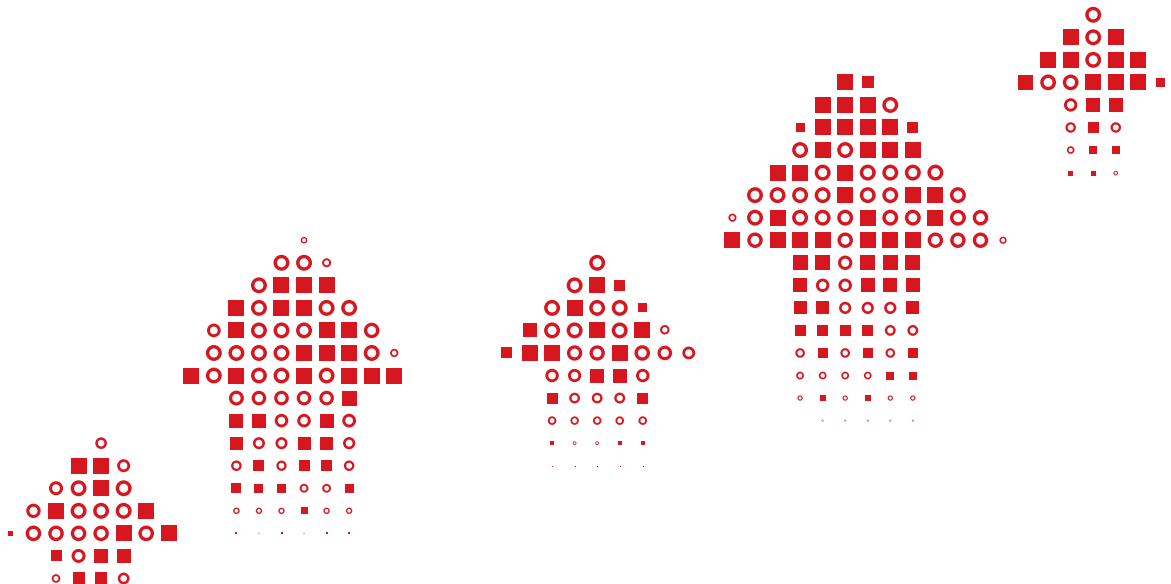




LOW-CODE

1C:ENTERPRISE

HIGHLOAD



1C LLC
www.1c.com
www.1c-dn.com
platform@1c.com

